

Generation of navigatable documentations from MATLAB / Simulink models with MReport

Developing software using the model-based approach becomes more and more important. The executable model, which will be developed according to the requirements in early development stages, plays the main role. It does not only serve to simulation and test the system for its functional correctness, but it is also the basis for the generation of software code and its integration into the system.

In order to benefit from the full potential of the model-based development a systematic and continuous documentation of the model is necessary. Therefore, IT Power Consultants (www.itpower.de) developed a new tool which supports developers to generate such a documentation. The tool MReport (Model Report) is now available and generates automatically a documentation in HTML format from Simulink models.

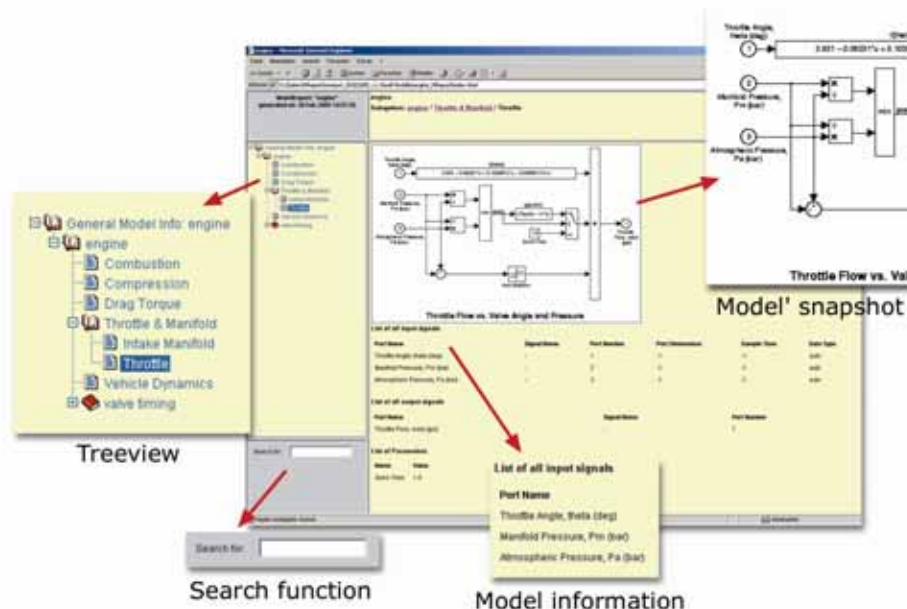


Figure 1: Documentation of a Simulink model generated with MReport

When generating the report the hierarchical structure of the model will be preserved and displayed as a treeview in the report. Thus, the user can easily navigate through the model. Especially when having complex models with a lot of subsystems the treeview helps to have a quick overview of the model.

MReport provides a Model Info Block which can be inserted into each subsystem. By means of this library block the model description and the change history of the model can be easily added into it.

These and also more comprehensive information about the subsystems such as parameters, parameter values, inputs, outputs and snapshots are displayed in the report. The generated report in HTML format can be read with any common web browser.

About IT Power Consultants

IT Power Consultants combine convincing core-competencies from the field of quality assurance and the development of software-development tools to innovative services and products for software development in the automotive industry. For additional information, visit www.itpower.de.

Contact

IT Power Consultants
Gustav-Meyer-Allee 25, Building 12
13355 Berlin, Germany

Mrs. Meike Lim

Phone: +49 - (0)30 - 46 77 69 46

Fax: +49 - (0)30 - 46 30 76 49

Email: meike.lim@itpower.de

Web: <http://www.itpower.de>